

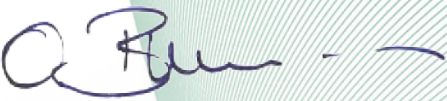
# (1) Type Examination Certificate

- (2) No. of the Type Examination Certificate: **ZP/B025/24**
- (3) Product: **Anchor device type D**  
Type: **TAURUS-PREFA**
- (4) Manufacturer: **INNOTECH Arbeitsschutz GmbH**
- (5) Address: **Laizing 10, 4656 Kirchham, AUSTRIA**
- (6) The design of this product and any acceptable variation thereto are specified in the schedule to this Type Examination Certificate.
- (7) The certification body of DEKRA Testing and Certification GmbH certifies that this product complies with the fundamental requirements of the standard listed under item 8 below. The examination and test results are set out in the report PB 24-016.
- (8) The requirements of the standard are assured by compliance with  
**DIN EN 795:2012** **DIN CEN/TS 16415:2017**
- (9) This Type Examination Certificate relates only to the design, examination and tests of the specified product in accordance to the standard list. Further requirements of the Directive apply to the manufacturing process and supply of this personal protective equipment. These are not covered by this certificate.
- (10) This Type Test Certificate is valid until 2029-01-31.

DEKRA Testing and Certification GmbH  
Bochum, 2024-02-01

signed: Brumm  
\_\_\_\_\_  
Managing director

\_\_\_\_\_  
We confirm the correctness of the translation from the German original.  
In the case of arbitration only the German wording shall be valid and binding.

  
\_\_\_\_\_  
Managing director

## TRANSLATION

- (11) Appendix to
- (12) **Type Examination Certificate**  
**ZP/B025/24**
- (13) 13.1 Subject and Type  
Anchor device type D  
Type: TAURUS-PREFA

### 13.2 Description

The anchor device of type TAURUS-PREFA is used for temporary protection of people against falls from a height. The system is intended for horizontal use and consists of a rail and the pertinent approved rail glider. The rail (=continuous cast aluminium profile) TAURUS RAIL-\*,\* is available as a straight or curved/arced variant. The connection between two guide pieces is established by a rail connector of type TAURUS VB-10 or a connector with an expansion compensation.

The mobile anchor points of types TAURUS-GLEIT-H11 and TAURUS-GLEIT-HO-53 are running on the anchor line. These are equipped with an appropriate eyelet to receive the connector of the user's PPE. Maximum three people can be simultaneously protected per 5 m rail length when using the system.

The system is mounted horizontally using the bracket combination of TAURUS and PREFA; the maximum distance between two brackets is 1500 mm. The rail can be positioned on warm roofs and cold roofs made PREFA Aluminiumprodukte GmbH.

The rail connector with expansion compensation is only intended for positioning the rail on the roof. The rail ends are provided with end stops to prevent their unintended overriding. Here, one end stop can be opened (entrance/exit: TAURUS EA-11) to either remove the mobile anchor point from the anchor line or to fix it on the anchor line. The other end stops can be fixedly closed (TAURUS-EA-10).



Fig. 1: Anchor device, type: TAURUS-PREFA



Fig. 2: Mobile anchor point  
type TAURUS GLEIT-H-11



Fig. 1: Mobile anchor point  
type TAURUS GLEIT-HO-53

TRANSLATION

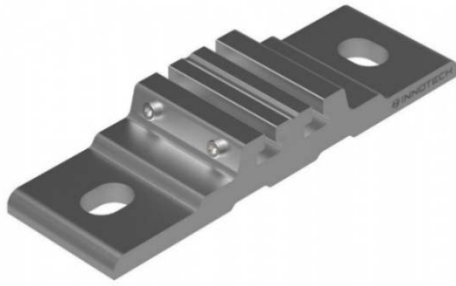


Fig. 4: Rail fastener type TAURUS-BEF-10

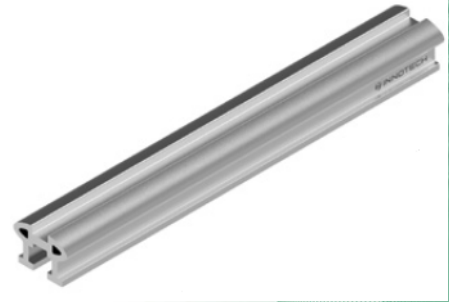


Fig. 5: Rail type TAURUS-RAIL-10

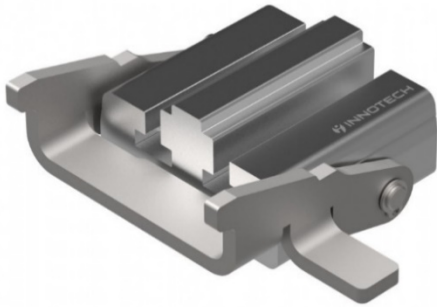


Fig. 6: Rail end type TAURUS-EA-11



Fig. 7: Rail end type TAURUS-EA-10



Fig. 8: Rail connector type VB-10



Fig. 9: Rail connector type VB-11

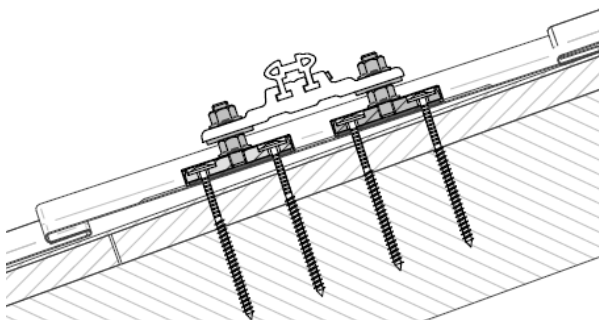


Fig. 10: Bracket combination (TAURUS and PREFEA)

(14) Report

PB 24-016 dd.2024-02-01